



February  
2020

# Medicaid & CHIP Beneficiaries at a Glance



Centers for Medicare & Medicaid Services  
**Medicaid & CHIP**  
Health Care Quality Measures

## KEY FACTS

**71,395,465**

Medicaid and CHIP Enrollment,  
October 2019<sup>1</sup>

**10,906,103**

\*People Dually Eligible for  
Medicare and Medicaid, March 2019<sup>1</sup>

**15,181,880**

\*\*Medicaid Expansion Adult  
Enrollment, September 2018<sup>1</sup>

**\$616 Billion**

Total Medicaid and CHIP  
Expenditures, 2018<sup>1</sup>

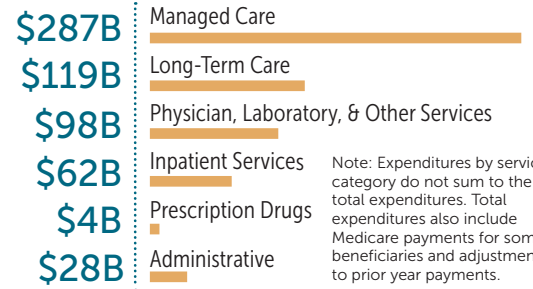
**42%**

U.S. Births Covered by  
Medicaid, 2018<sup>2</sup>

**69%**

Medicaid Beneficiaries Enrolled in  
Comprehensive Managed Care, 2017<sup>1</sup>

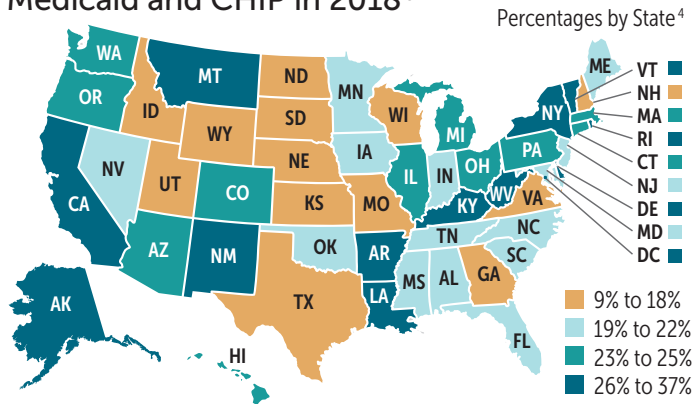
## Annual Medicaid and CHIP Expenditure by Service Category, 2017<sup>1</sup>



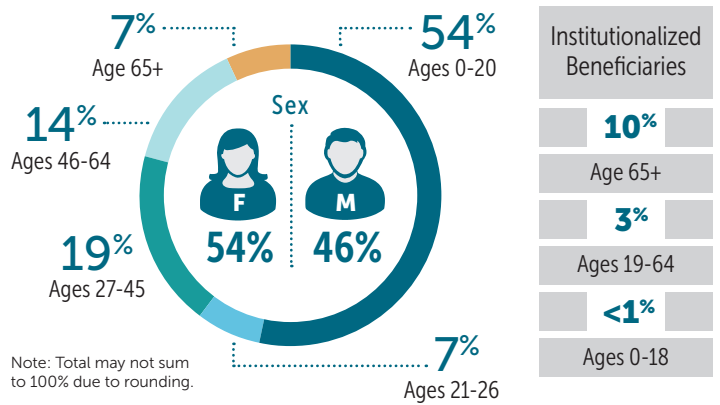
Note: Expenditures by service category do not sum to the total expenditures. Total expenditures also include Medicare payments for some beneficiaries and adjustments to prior year payments.

## BENEFICIARY CHARACTERISTICS

### 18% of the U.S. Population Were Enrolled in Medicaid and CHIP in 2018<sup>3</sup>



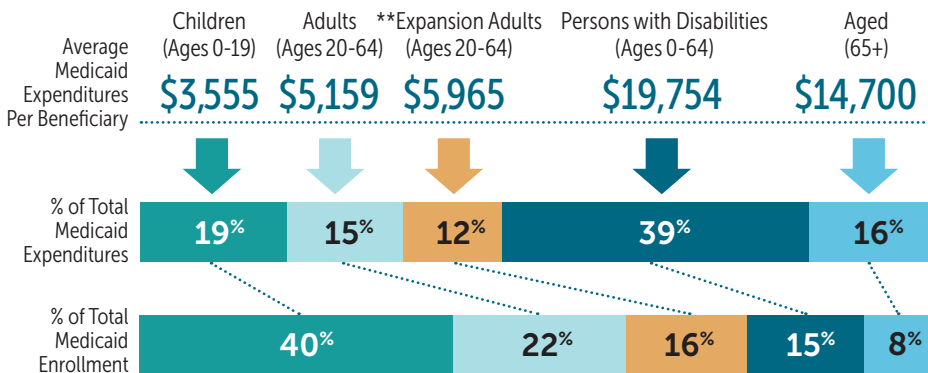
### Beneficiaries by Age,<sup>1</sup> Sex,<sup>1</sup> and Institutionalized Status,<sup>5</sup> 2017



Note: Total may not sum to 100% due to rounding.

## BENEFICIARY CATEGORIES AND FUNCTIONAL STATUS

### Medicaid Average Cost, Enrollment, and Expenditures, by Beneficiary Category, 2016<sup>1</sup>

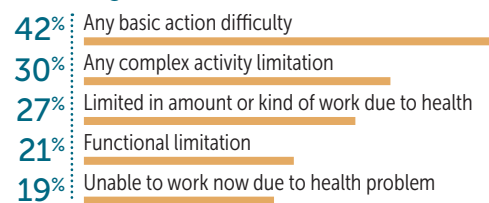


Note: Children and adults with disabilities as their basis for eligibility are included in the category of persons with disabilities.

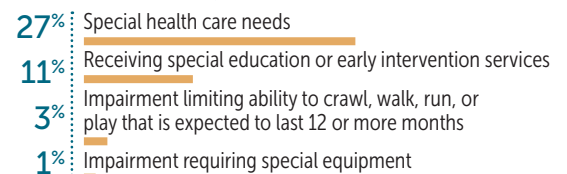
\*\* Expansion adults = Adults made newly eligible for Medicaid under the Affordable Care Act beginning in 2014.

### Beneficiaries' Self-Reported Functional Status, 2017<sup>6</sup>

#### Adults (Ages 19-64, non-institutionalized)



#### Children (Under age 19, non-institutionalized)



Note: These categories are not mutually exclusive or exhaustive.

If you would like more information about the Medicaid and CHIP programs and their beneficiaries, please see the following additional resources:

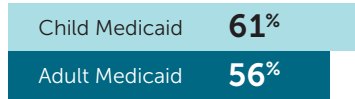
- The **Medicaid and CHIP Beneficiary Profile** provides an overview of the characteristics, health status, access, utilization, expenditures, and experience of the beneficiaries served by Medicaid and CHIP. It is available at: <https://www.medicaid.gov/medicaid/quality-of-care/index.html>
- CMS developed the **Medicaid and CHIP Scorecard** to increase public transparency and accountability about the programs' administration and outcomes. It is available at: <https://www.medicaid.gov/state-overviews/scorecard/index.html>

### Getting Needed Care, 2019<sup>7</sup>

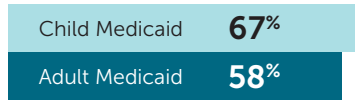


Percentage of Survey Respondents Who Selected 'Always'

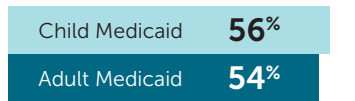
#### Getting Needed Care Composite



#### How often was easy to get needed care, tests, or treatment

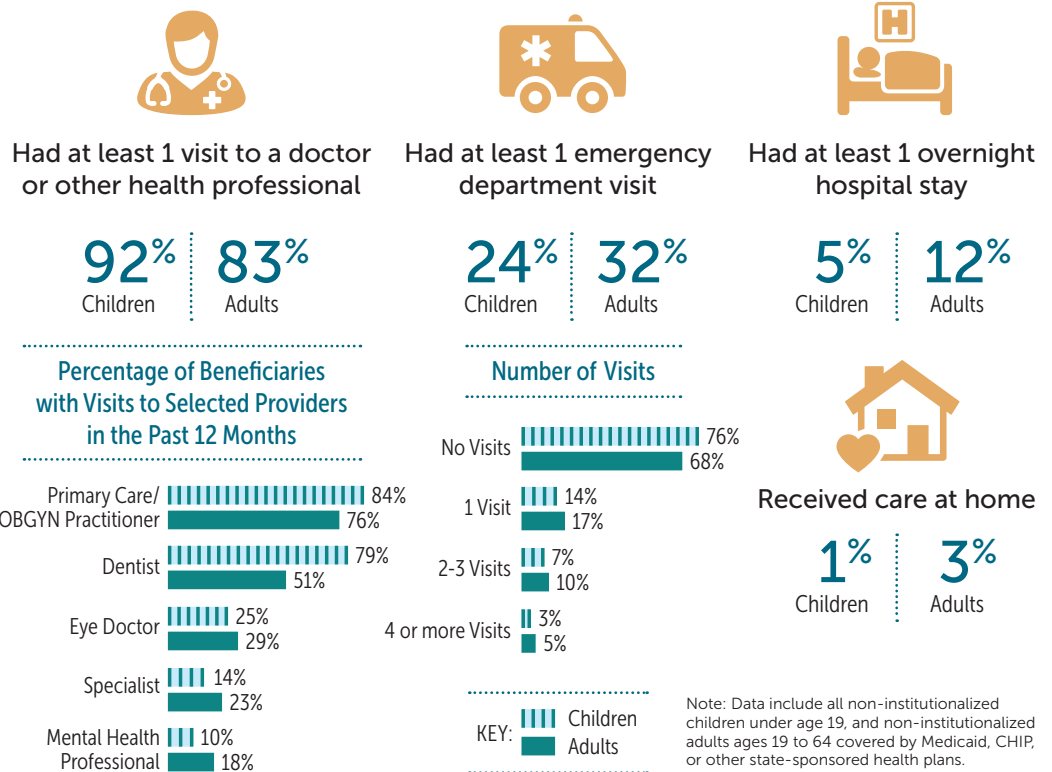


#### Got appointments with specialists as soon as needed



Note: "Getting Needed Care Composite" combines responses of the two other questions in this section, which are shown below it.

### Self-Reported Health Care Utilization Among Non-Institutionalized Children and Adults Covered by Medicaid or CHIP, 2017<sup>6</sup>

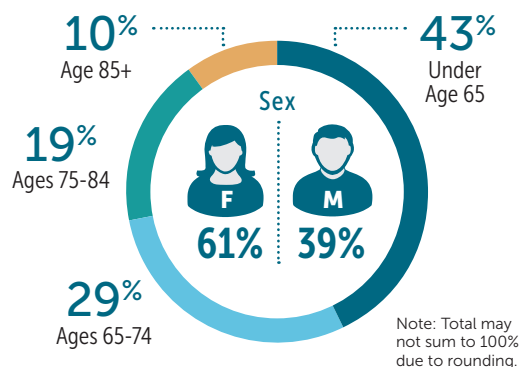


DUALLY ELIGIBLE BENEFICIARIES

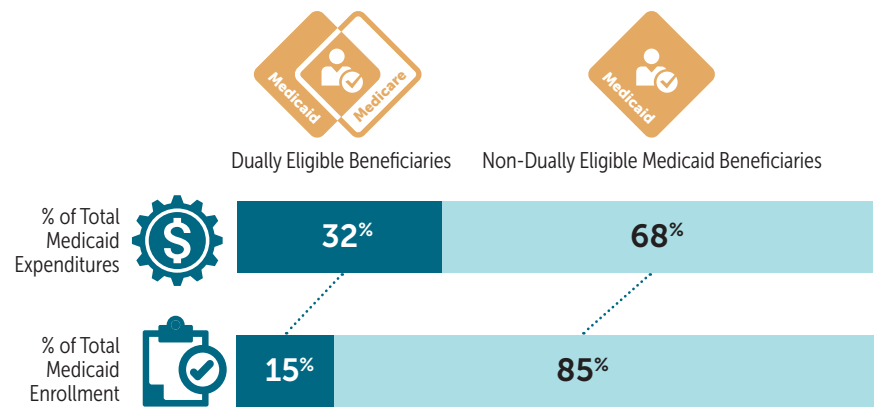


**Fast fact:** Dually eligible beneficiaries are people dually eligible for Medicare and Medicaid. About three-fourths (72 percent) of dually eligible beneficiaries receive full Medicaid benefits and the remainder (28 percent) receive partial Medicaid benefits.

### Demographic Characteristics of Dually Eligible Beneficiaries, 2016<sup>8</sup>



### Expenditures and Enrollment by Dual Eligible Status, 2013<sup>9</sup>



DATA SOURCES

1. Based on Centers for Medicare & Medicaid Services (CMS) administrative data.
2. Based on National Center for Health Statistics data.
3. Based on U.S. Census data.
4. Based on CMS administrative data and U.S. Census data.
5. Based on American Community Survey data in the Integrated Public Use Microdata Series (IPUMS USA).
6. Based on Medicaid and CHIP Payment and Access Commission (MACPAC) analysis of National Health Interview Survey data.
7. Based on Agency for Healthcare Research and Quality analysis of Consumer Assessment of Healthcare Providers and Systems (CAHPS) Health Plan Survey data.
8. Based on Medicare Payment Advisory Commission (MEDPAC) analysis of Medicare Current Beneficiary Survey data.
9. Based on joint MEDPAC and MACPAC analysis of CMS administrative data.

**Suggested Citation:** Center for Medicaid and CHIP Services, Division of Quality and Health Outcomes. **Medicaid and CHIP Beneficiaries at a Glance.** Centers for Medicare & Medicaid Services. Baltimore, MD. February 2020.