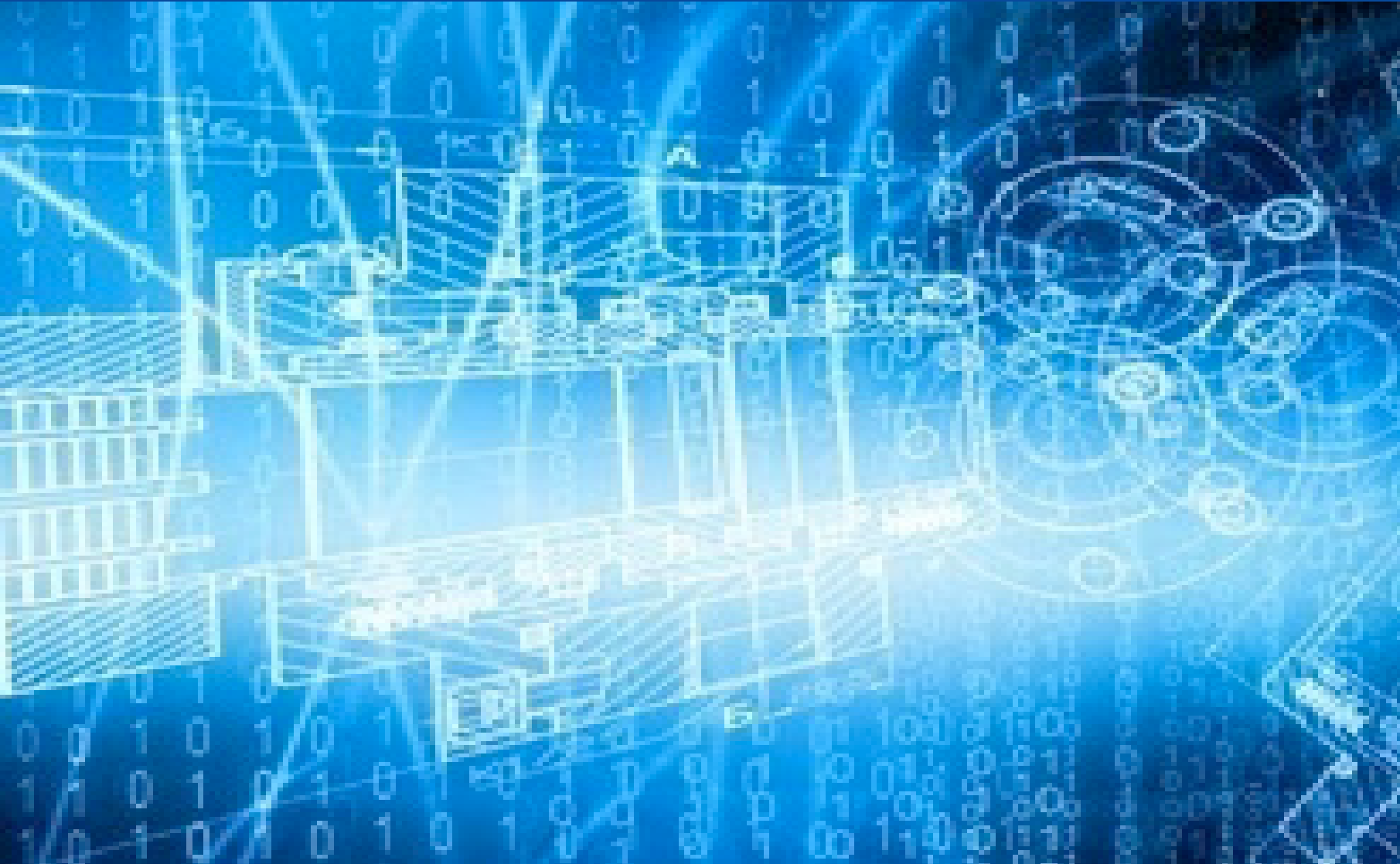


January 2023 Medicaid and CHIP Enrollment Trends Snapshot



*Center for Medicaid
and CHIP Services*

Enrollment Snapshot

- To be responsive to questions on Medicaid and CHIP enrollment, particularly given the impact of the COVID-19 public health emergency (PHE), this Enrollment Snapshot captures high level information on the most recently submitted month of Performance Indicator Enrollment Data¹ within the context of trends since February 2020², focusing on:
 - Total Medicaid and CHIP enrollment;
 - Medicaid enrollment;
 - CHIP enrollment;
 - Adult enrollment; and
 - Child enrollment.
- This analysis also captures high level information on the trend in the number of Medicaid and CHIP applications received by states.

¹ Performance Indicator Enrollment Data counts individuals receiving full-scope and comprehensive Medicaid and CHIP benefits.

² February 2020 serves as a baseline prior to the impacts of the COVID-19 pandemic and the enactment of the Families First Coronavirus Response Act (FFCRA) in March 2020. Section 6008 of FFCRA includes a continuous enrollment condition, which states must comply with through March 31, 2023 to receive a temporary federal medical assistance percentage (FMAP) increase.

Key Findings

- In January 2023, **93,008,246** individuals were enrolled in Medicaid and CHIP.¹
 - **85,915,795** individuals were enrolled in Medicaid in January 2023, an increase of 629,200 individuals from December 2022.
 - **7,092,451** individuals were enrolled in CHIP in January 2023, an increase of 30,891 individuals from December 2022.
- Since February 2020, enrollment in Medicaid and CHIP has increased by **22,358,006** individuals (31.6%).
 - Medicaid enrollment has increased by **22,110,705** individuals (34.7%).
 - CHIP enrollment has increased by **247,301** individuals (3.6%).
- The Medicaid enrollment increases are likely driven by COVID-19 and the continuous enrollment condition in the Families First Coronavirus Response Act (FFCRA).²

Source: Medicaid and CHIP Eligibility and Enrollment Performance Indicator Data as of March 23, 2023.

¹ Performance Indicator Enrollment Data counts individuals receiving full-scope and comprehensive Medicaid and CHIP benefits.

² Families First Coronavirus Response Act, Pub. L. No. 116-127, Sec 6008, Temporary Increase of Medicaid FMAP, available at: <https://www.govinfo.gov/content/pkg/COMPS-15683/pdf/COMPS-15683.pdf>. Note that Sec. 6008 of the FFCRA is amended by the Consolidated Appropriations Act, Pub. L. No. 117-328. <https://www.congress.gov/117/bills/hr2617/BILLS-117hr2617enr.pdf>.

Key Findings (continued)

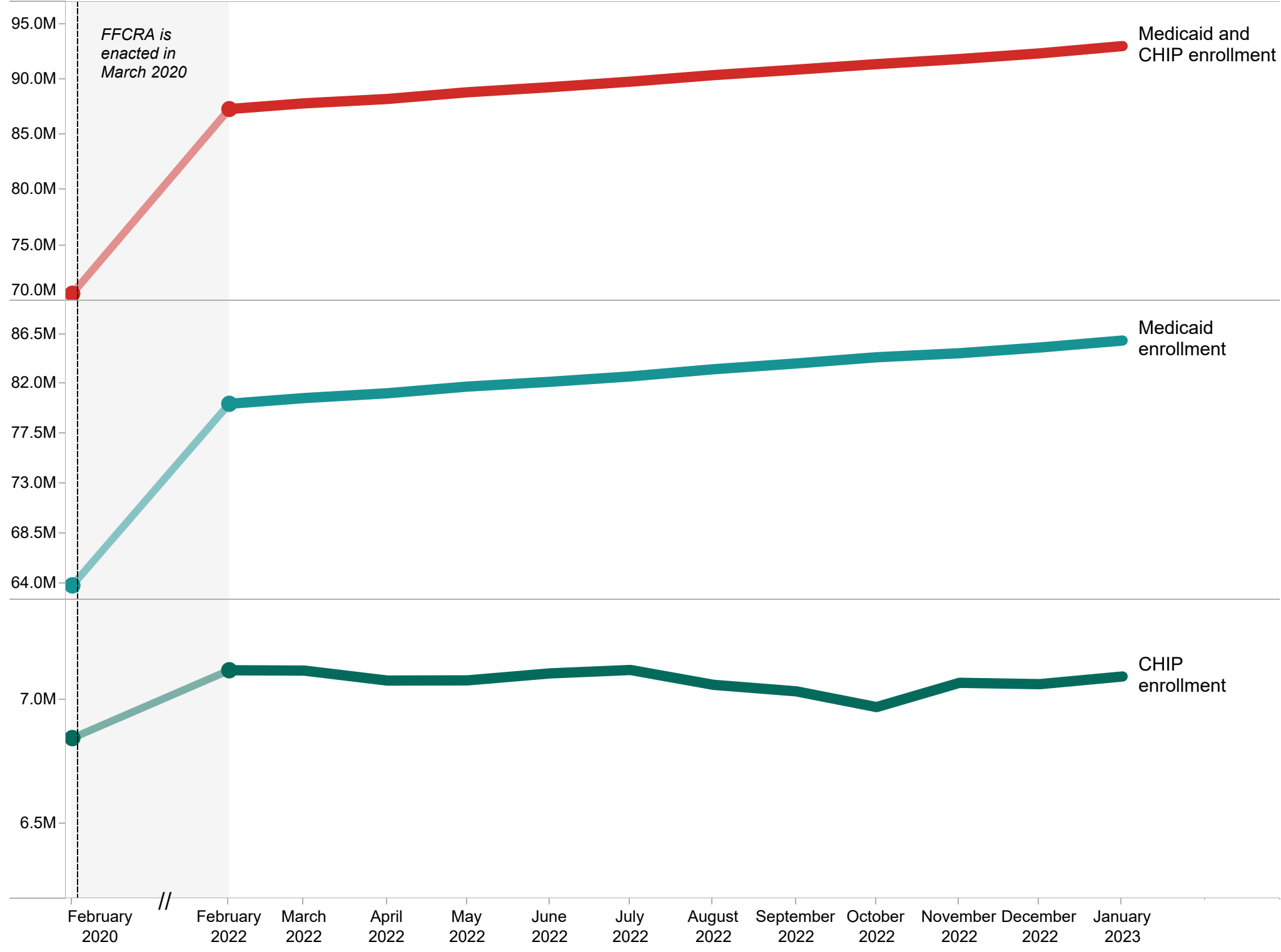
- In January 2023, **2,497,172** applications for Medicaid and CHIP were submitted directly to states.¹
 - The number of applications submitted directly to states was 5.8 percent higher in January 2023 compared to December 2022.
- In January 2023, **292,420** applications were transferred from the Federally Facilitated Marketplace (FFM) to states.²
 - The number of transferred applications was 50 percent lower in January 2023 compared to December 2022.

Source: Medicaid and CHIP Eligibility and Enrollment Performance Indicator Data as of March 23, 2023.

¹ These counts include applications received by 49 states and the District of Columbia. Kansas is excluded because the state did not report applications data for December 2022 and January 2023. For additional information, please see Figure 6.

² These counts include applications and account transfer data from 49 states and the District of Columbia. Kansas is excluded because the state did not report applications data for any month during the analysis. Florida did not report the number of applications transferred to the FFM in December 2022 and January 2023. For additional information, please see Figure 5.

Figure 1. National Medicaid and CHIP enrollment, February 2020 to January 2023, CMS Performance Indicator Data



Date	Medicaid and CHIP enrollment	Medicaid enrollment	CHIP enrollment
January 2023	93,008,246	85,915,795	7,092,451
December 2022	92,348,155	85,286,595	7,061,560
November 2022	91,837,162	84,770,158	7,067,004
October 2022	91,376,584	84,406,997	6,969,587
September 2022	90,879,934	83,847,157	7,032,777
August 2022	90,383,069	83,324,133	7,058,936
July 2022	89,796,134	82,677,643	7,118,491
June 2022	89,296,882	82,192,003	7,104,879
May 2022	88,835,646	81,758,857	7,076,789
April 2022	88,229,999	81,153,925	7,076,074
March 2022	87,838,115	80,722,072	7,116,043
February 2022	87,322,985	80,205,575	7,117,410
February 2020	70,650,240	63,805,090	6,845,150

Annual trend, February 2022 to January 2023

From February 2022 to January 2023, national Medicaid and CHIP enrollment increased by 5,685,261 individuals (6.5%).

Monthly trend, December 2022 to January 2023

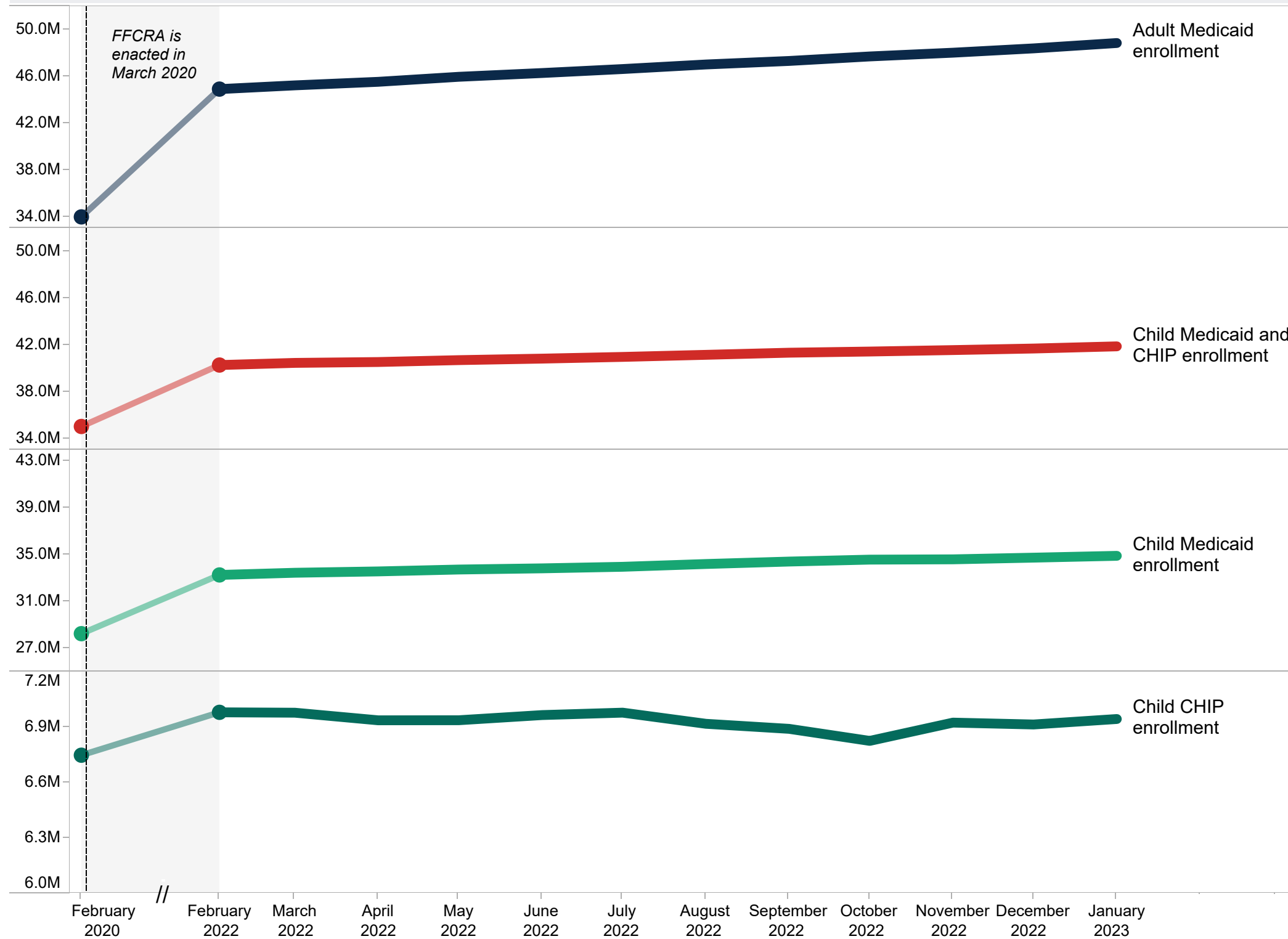
<u>Total enrollment</u>	<u>Medicaid enrollment</u>	<u>CHIP enrollment</u>
Increased by 660,091 (+0.7%) ↑	Increased by 629,200 (+0.7%) ↑	Increased by 30,891 (+0.4%) ↑

Cumulative change, February 2020 to January 2023*

<u>Total enrollment</u>	<u>Medicaid enrollment</u>	<u>CHIP enrollment</u>
Increased by 22,358,006 (+31.6%) ↑	Increased by 22,110,705 (+34.7%) ↑	Increased by 247,301 (+3.6%) ↑

Source: Medicaid and CHIP Eligibility and Enrollment Performance Indicator Data as of March 23, 2023.
Note: This analysis includes preliminary enrollment data from 50 states and the District of Columbia. "FFCRA" refers to the Families First Coronavirus Response Act. Section 6008 of FFCRA includes a continuous enrollment condition, which states must comply with through March 31, 2023 to receive a temporary federal medical assistance percentage (FMAP) increase.
 *The cumulative change compares the most recent enrollment data to February 2020, which serves as a baseline of enrollment prior to the impacts of the COVID-19 pandemic and FFCRA's continuous enrollment condition. For additional information on Medicaid and CHIP enrollment from December 2019 to January 2023, please see Appendix A.

Figure 2. National adult and child enrollment in Medicaid and CHIP, February 2020 to January 2023, CMS Performance Indicator Data



Date	Adult Medicaid enrollment	Child Medicaid and CHIP enrollment	Child Medicaid enrollment	Child CHIP enrollment
January 2023	48,843,485	41,859,753	34,916,260	6,943,493
December 2022	48,383,559	41,673,400	34,759,554	6,913,846
November 2022	48,014,088	41,539,941	34,615,969	6,923,972
October 2022	47,692,928	41,415,649	34,590,551	6,825,098
September 2022	47,306,397	41,315,729	34,425,491	6,890,238
August 2022	47,004,272	41,133,690	34,216,064	6,917,626
July 2022	46,613,448	40,954,715	33,976,829	6,977,886
June 2022	46,272,164	40,808,347	33,843,569	6,964,778
May 2022	45,949,242	40,679,612	33,742,751	6,936,861
April 2022	45,519,654	40,517,689	33,581,224	6,936,465
March 2022	45,215,978	40,443,156	33,465,577	6,977,579
February 2022	44,895,450	40,258,307	33,278,662	6,979,645
February 2020	33,948,432	34,996,019	28,248,386	6,747,633

Annual trend, February 2022 to January 2023
 From February 2022 to January 2023, national adult and child enrollment increased by 5,549,481 individuals (6.5%).

Monthly trend, December 2022 to January 2023

<u>Adult Medicaid enrollment</u>	<u>Child Medicaid and CHIP enrollment</u>
Increased by 459,926 (+1.0%)	Increased by 186,353 (+0.4%)

Cumulative change, February 2020 to January 2023*

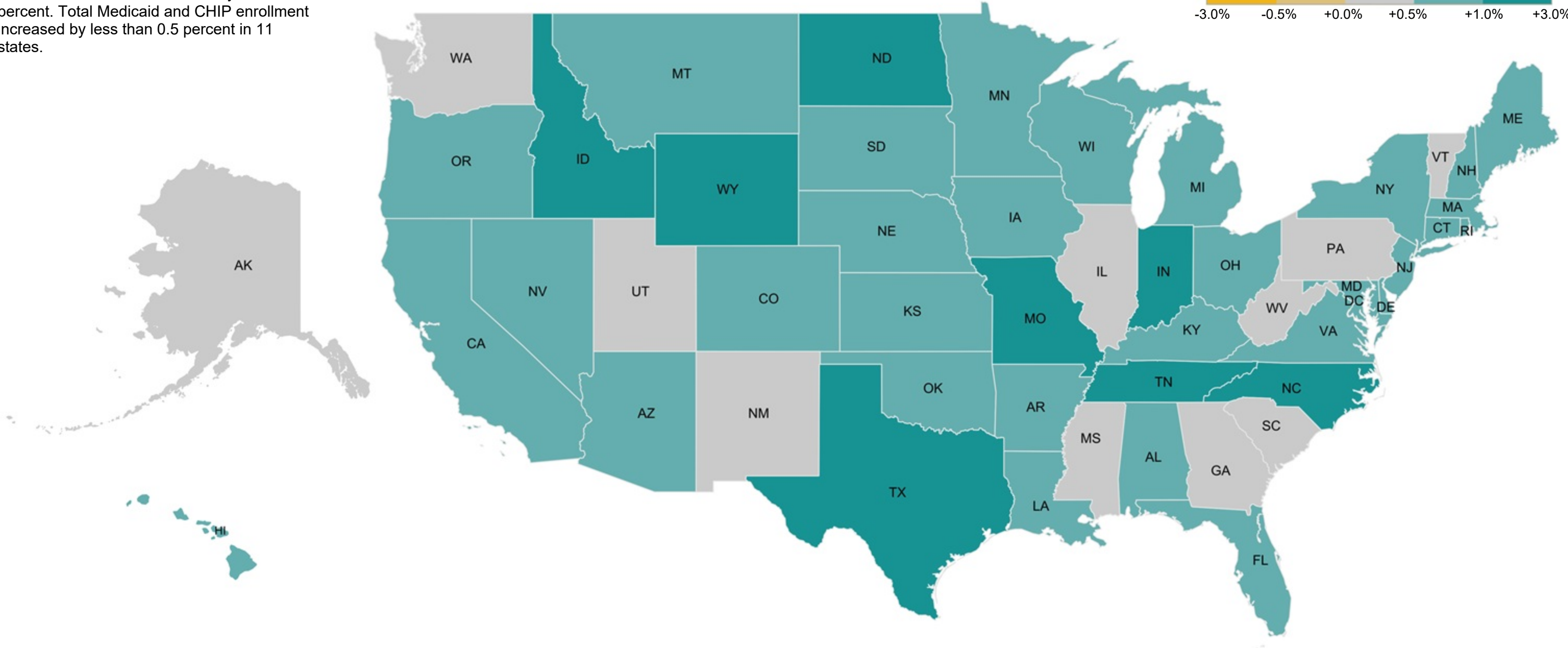
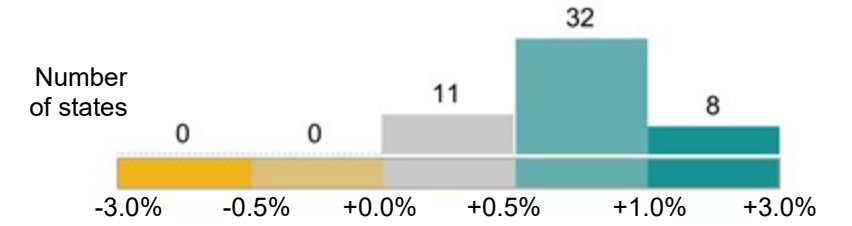
<u>Adult Medicaid enrollment</u>	<u>Child Medicaid and CHIP enrollment</u>
Increased by 14,895,053 (+43.9%)	Increased by 6,863,734 (+19.6%)

Source: Medicaid and CHIP Eligibility and Enrollment Performance Indicator Data as of March 23, 2023.
Note: This analysis includes preliminary enrollment data from 49 states and the District of Columbia. Arizona is excluded because the state did not report the breakouts for adult and child enrollment between February 2020 and January 2023. "FFCRA" refers to the Families First Coronavirus Response Act. Section 6008 of FFCRA includes a continuous enrollment condition, which states must comply with through March 31, 2023 to receive a temporary federal medical assistance percentage (FMAP) increase.
 *The cumulative change compares the most recent enrollment data to February 2020, which serves as a baseline of enrollment prior to the impacts of the COVID-19 pandemic and FFCRA's continuous enrollment condition. For additional information on adult and child enrollment in Medicaid and CHIP from December 2019 to January 2023, please see Appendix B.

Figure 3. Change in total Medicaid and CHIP enrollment, December 2022 to January 2023, CMS Performance Indicator Data

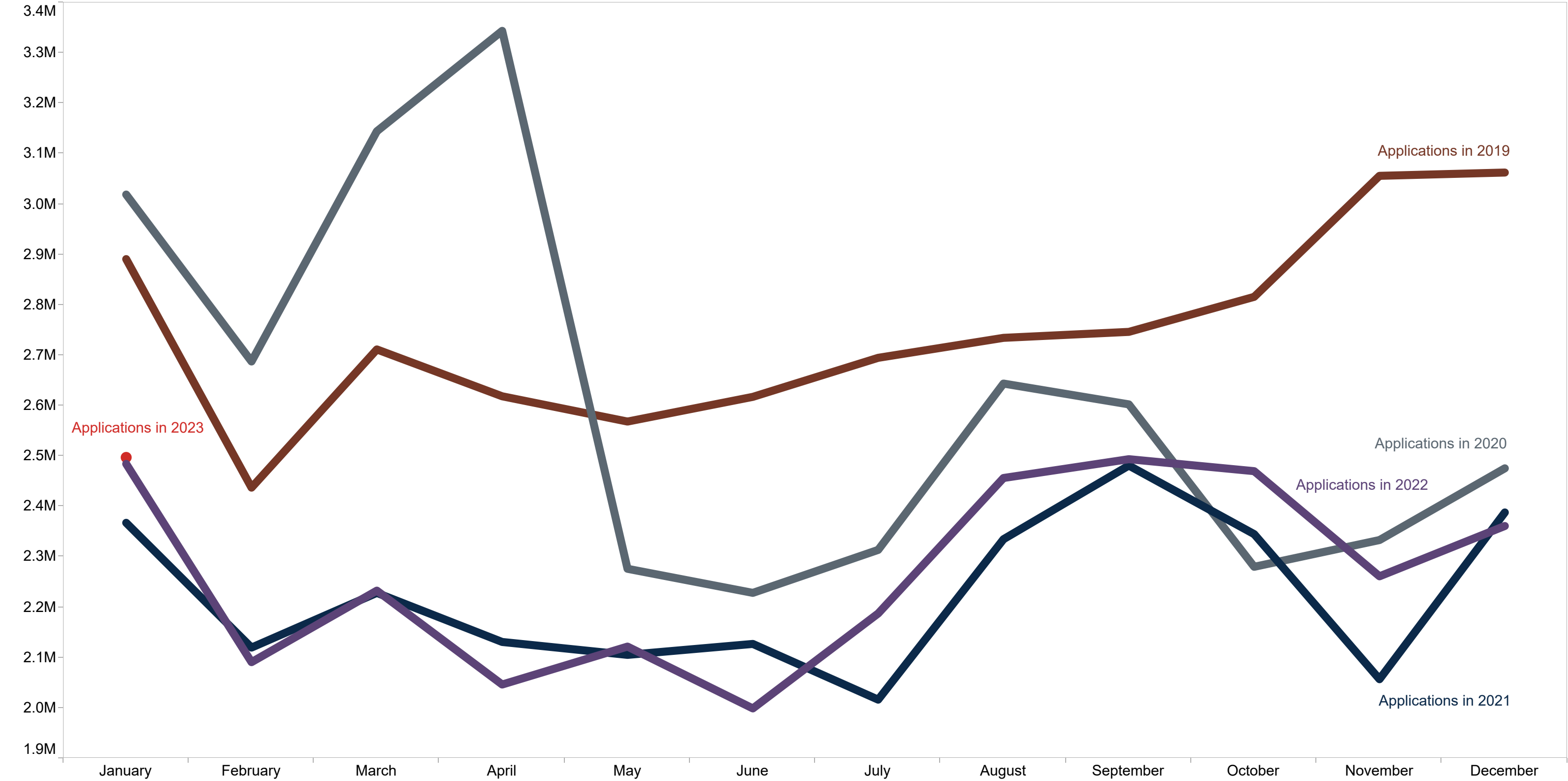
Nationally, total Medicaid and CHIP enrollment increased by 0.7 percent from December 2022 to January 2023. In 8 states, total Medicaid and CHIP enrollment increased by 1.0 to 3.0 percent.⁽¹⁾ In 31 states and the District of Columbia, total Medicaid and CHIP enrollment increased by 0.5 to 1.0 percent. Total Medicaid and CHIP enrollment increased by less than 0.5 percent in 11 states.

Percentage change in Medicaid and CHIP enrollment



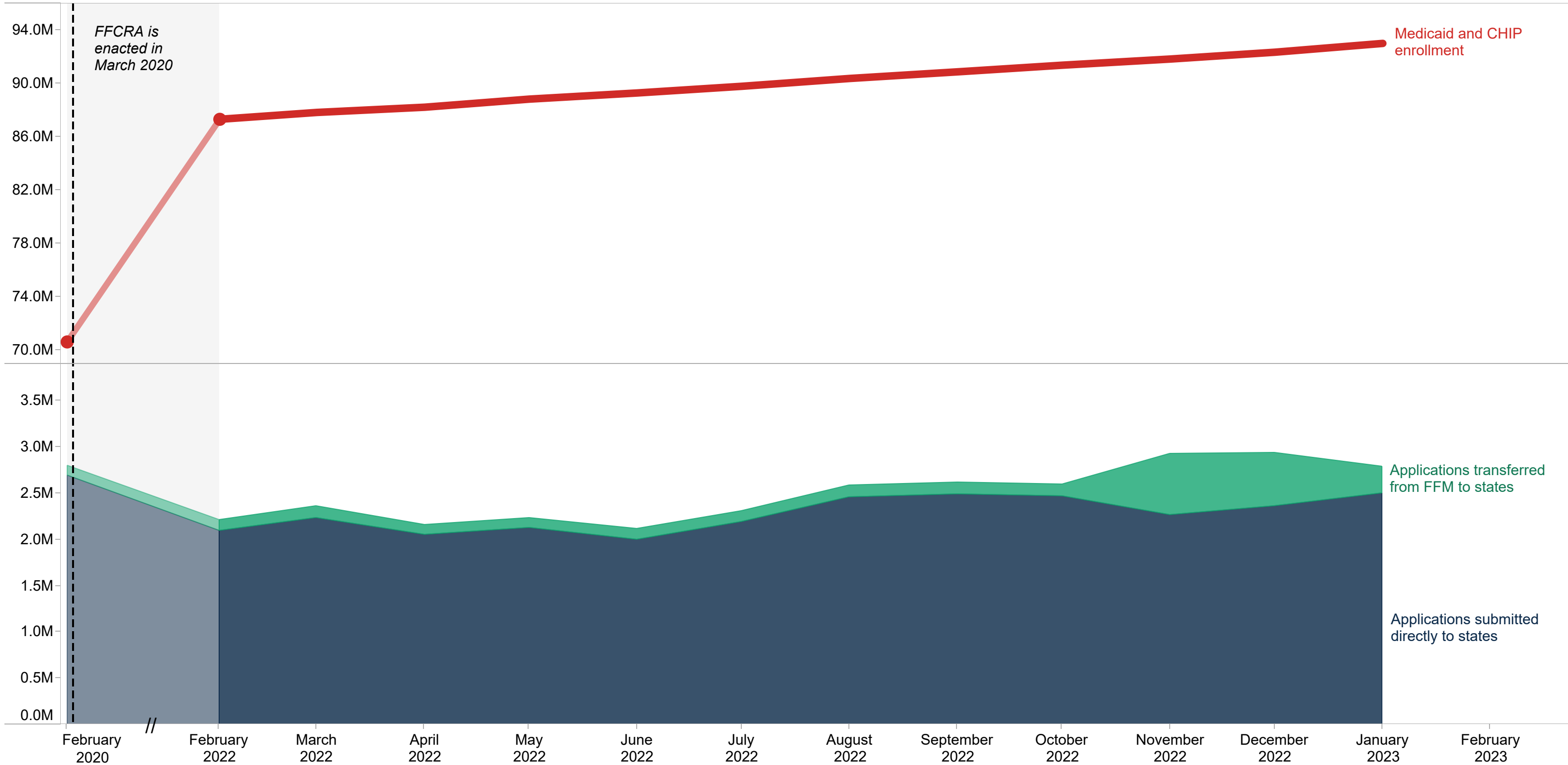
Source: Medicaid and CHIP Eligibility and Enrollment Performance Indicator Data as of March 23, 2023.
Note: This analysis includes preliminary enrollment data from 50 states and the District of Columbia.

Figure 4. National Medicaid and CHIP applications submitted directly to states from 2019 to 2023, CMS Performance Indicator Data



Source: Medicaid and CHIP Eligibility and Enrollment Performance Indicator Data as of March 23, 2023.
Note: Applications submitted directly to states include applications received by any state agency with the authority to make Medicaid or CHIP eligibility determinations, including the Medicaid agency, a separate CHIP agency, or a state-based marketplace. Applications transferred from the FFM are not included. This analysis includes preliminary applications data from 49 states and the District of Columbia. Kansas did not report applications data for any month between January 2019 and January 2023 and so is excluded.
Data context: Tennessee did not report applications in January and February 2019. Maine did not report applications in June 2020.

Figure 5. Comparison of Medicaid and CHIP enrollment with the number of applications received, February 2020 to January 2023, CMS Performance Indicator Data

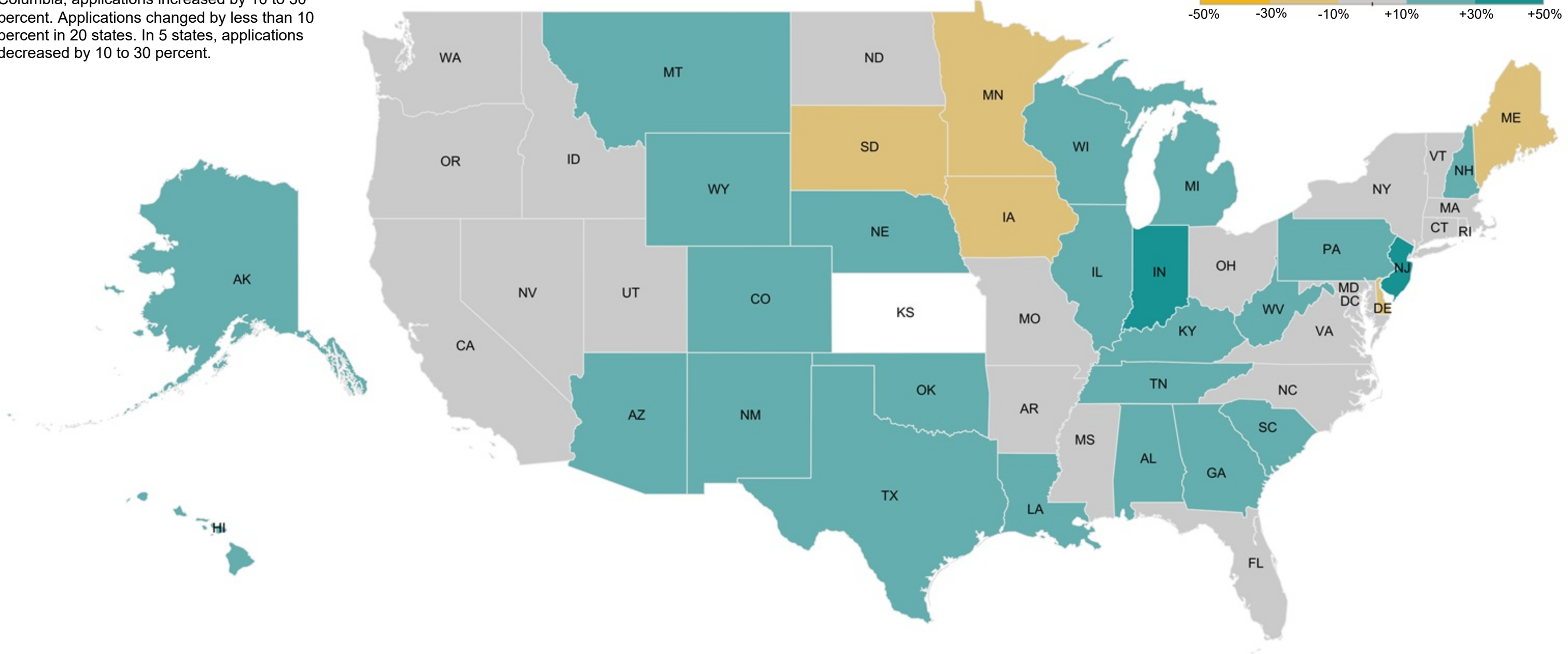
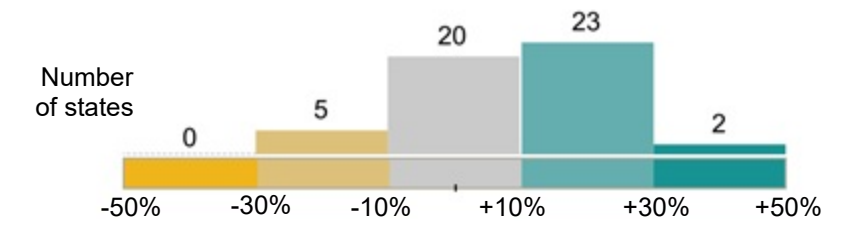


Source: Medicaid and CHIP Eligibility and Enrollment Performance Indicator Data as of March 23, 2023.
Note: Applications submitted directly to states include applications received by any state agency with the authority to make Medicaid or CHIP eligibility determinations, including the Medicaid agency, a separate CHIP agency, or a state-based marketplace. Applications transferred from the FFM to states include the total number of accounts electronically transferred from the FFM to states for Medicaid or CHIP. This analysis includes preliminary enrollment data from 50 states and the District of Columbia, and applications and account transfer data for 49 states and the District of Columbia. Kansas did not report data on applications submitted directly to the state for any month between February 2020 and January 2023, and so is excluded.
Data context: Maine did not report applications in June 2020. Florida did not report the number of applications transferred from the FFM in December 2022 and January 2023.

Figure 6. Change in Medicaid and CHIP applications submitted directly to states, December 2022 to January 2023, CMS Performance Indicator Data

Nationally, the number of Medicaid and CHIP applications submitted directly to states was about 6 percent higher in January 2023 compared to December 2022. In Indiana and New Jersey, applications increased by more than 30 percent.⁽¹⁾ In 22 states and the District of Columbia, applications increased by 10 to 30 percent. Applications changed by less than 10 percent in 20 states. In 5 states, applications decreased by 10 to 30 percent.

Percentage change in Medicaid and CHIP applications



Source: Medicaid and CHIP Eligibility and Enrollment Performance Indicator Data as of March 23, 2023.
Note: Applications submitted directly to states include applications received by any state agency with the authority to make Medicaid or CHIP eligibility determinations, including the Medicaid agency, a separate CHIP agency, or a state-based marketplace. Applications transferred from the FFM are not included. This analysis includes preliminary applications data from 49 states and the District of Columbia. Kansas is excluded because the state did not report applications data for December 2022 and January 2023.
Data Context: (1) In Indiana, applications increased by 48.0 percent (10,023 applications) in January 2023. In New Jersey, applications increased by 46.1 percent (12,240 applications) in January 2023.
 © 2021 Mapbox © OpenStreetMap

Appendices

Appendix A. National Medicaid and CHIP enrollment, December 2019 to January 2023

Date	Medicaid and CHIP enrollment	Medicaid enrollment	CHIP enrollment
December 2019	70,596,010	63,848,609	6,747,401
January 2020	70,703,972	63,946,188	6,757,784
February 2020	70,650,240	63,805,090	6,845,150
March 2020	70,939,790	64,077,613	6,862,177
April 2020	72,381,751	65,477,542	6,904,209
May 2020	73,510,922	66,643,609	6,867,313
June 2020	74,634,133	67,789,562	6,844,571
July 2020	75,510,605	68,650,684	6,859,921
August 2020	76,458,624	69,597,659	6,860,965
September 2020	77,267,922	70,376,468	6,891,454
October 2020	78,071,548	71,142,698	6,928,850
November 2020	78,825,337	71,876,883	6,948,454
December 2020	79,666,798	72,699,244	6,967,554
January 2021	80,371,310	73,497,730	6,873,580
February 2021	80,905,545	73,902,951	7,002,594
March 2021	81,556,564	74,538,533	7,018,031
April 2021	82,128,092	75,094,448	7,033,644
May 2021	82,583,213	75,535,624	7,047,589
June 2021	83,082,353	76,017,771	7,064,582
July 2021	83,619,304	76,538,739	7,080,565
August 2021	84,277,797	77,176,916	7,100,881
September 2021	84,814,198	77,692,798	7,121,400
October 2021	85,320,683	78,224,423	7,096,260
November 2021	85,785,045	78,716,526	7,068,519
December 2021	86,348,122	79,269,414	7,078,708
January 2022	86,899,258	79,809,118	7,090,140
February 2022	87,322,985	80,205,575	7,117,410
March 2022	87,838,115	80,722,072	7,116,043
April 2022	88,229,999	81,153,925	7,076,074
May 2022	88,835,646	81,758,857	7,076,789
June 2022	89,296,882	82,192,003	7,104,879
July 2022	89,796,134	82,677,643	7,118,491
August 2022	90,383,069	83,324,133	7,058,936
September 2022	90,879,934	83,847,157	7,032,777
October 2022	91,376,584	84,406,997	6,969,587
November 2022	91,837,162	84,770,158	7,067,004
December 2022	92,348,155	85,286,595	7,061,560
January 2023	93,008,246	85,915,795	7,092,451

Source: Medicaid and CHIP Eligibility and Enrollment Performance Indicator Data as of March 23, 2023.
Note: This table summarizes Medicaid and CHIP enrollment since December 2019. This table is provided as a supplement to Figure 1, and includes preliminary enrollment data from 50 states and the District of Columbia.

Appendix B. National adult and child enrollment in Medicaid and CHIP, December 2019 to January 2023

Date	Adult Medicaid enrollment	Child Medicaid and CHIP enrollment	Child Medicaid enrollment	Child CHIP enrollment
December 2019	33,867,640	35,020,297	28,370,346	6,649,951
January 2020	33,994,084	35,007,256	28,346,187	6,661,069
February 2020	33,948,432	34,996,019	28,248,386	6,747,633
March 2020	34,021,976	35,171,070	28,409,786	6,761,284
April 2020	35,034,375	35,566,143	28,763,055	6,803,088
May 2020	35,691,895	36,001,665	29,237,244	6,764,421
June 2020	36,387,649	36,406,552	29,666,772	6,739,780
July 2020	36,905,713	36,742,484	29,990,353	6,752,131
August 2020	37,504,048	37,067,194	30,315,619	6,751,575
September 2020	38,031,349	37,333,145	30,553,499	6,779,646
October 2020	38,537,010	37,609,852	30,795,517	6,814,335
November 2020	39,041,655	37,840,880	31,009,747	6,831,133
December 2020	39,631,696	38,072,095	31,224,096	6,847,999
January 2021	40,102,214	38,287,287	31,535,130	6,752,157
February 2021	40,468,410	38,438,794	31,559,404	6,879,390
March 2021	40,898,474	38,646,820	31,753,682	6,893,138
April 2021	41,277,268	38,823,759	31,916,850	6,906,909
May 2021	41,574,191	38,964,418	32,044,941	6,919,477
June 2021	41,909,252	39,113,545	32,179,074	6,934,471
July 2021	42,290,845	39,256,357	32,307,508	6,948,849
August 2021	42,723,107	39,466,545	32,498,899	6,967,646
September 2021	43,089,132	39,623,468	32,635,893	6,987,575
October 2021	43,453,843	39,753,269	32,791,286	6,961,983
November 2021	43,813,701	39,843,157	32,910,094	6,933,063
December 2021	44,232,044	39,976,396	33,034,152	6,942,244
January 2022	44,620,474	40,123,052	33,170,545	6,952,507
February 2022	44,895,450	40,258,307	33,278,662	6,979,645
March 2022	45,215,978	40,443,156	33,465,577	6,977,579
April 2022	45,519,654	40,517,689	33,581,224	6,936,465
May 2022	45,949,242	40,679,612	33,742,751	6,936,861
June 2022	46,272,164	40,808,347	33,843,569	6,964,778
July 2022	46,613,448	40,954,715	33,976,829	6,977,886
August 2022	47,004,272	41,133,690	34,216,064	6,917,626
September 2022	47,306,397	41,315,729	34,425,491	6,890,238
October 2022	47,692,928	41,415,649	34,590,551	6,825,098
November 2022	48,014,088	41,539,941	34,615,969	6,923,972
December 2022	48,383,559	41,673,400	34,759,554	6,913,846
January 2023	48,843,485	41,859,753	34,916,260	6,943,493

Source: Medicaid and CHIP Eligibility and Enrollment Performance Indicator Data as of March 23, 2023.
Note: This table summarizes adult and child enrollment in Medicaid and CHIP since December 2019. This table is provided as a supplement to Figure 2, and includes preliminary enrollment data from 49 states and the District of Columbia. Arizona is excluded from both Figure 2 and Appendix B because the state did not report the breakouts for adult and child enrollment between February 2020 and January 2023.

Background

- This is a Center for Medicaid & CHIP Services (CMCS) Medicaid and CHIP Coverage Learning Collaborative (MAC LC) project that monitors Medicaid and Children's Health Insurance Program (CHIP) enrollment trends, primarily using the Centers for Medicare and Medicaid Services (CMS) Performance Indicator Data.
- The MAC LC is a CMCS project that provides a forum for facilitated discussion and learning across CMS and states, with the goal of implementing and improving the programs, tools, and systems needed to ensure high-performing state health insurance programs. The MAC LC has enabled CMS to more effectively identify issues and also monitor and improve program performance.
- This snapshot is a companion to the January 2023 Medicaid & CHIP Application, Eligibility, and Enrollment Data posted on [Medicaid.gov](https://www.Medicaid.gov).
- The Enrollment Trends project primarily relies on Performance Indicator Data. All states—including the District of Columbia—provide data each month about their Medicaid and CHIP eligibility and enrollment activity. These data reflect a range of indicators related to key application, eligibility, and enrollment processes within the state Medicaid and CHIP agency. The complete data set is available on Data.Medicaid.gov.