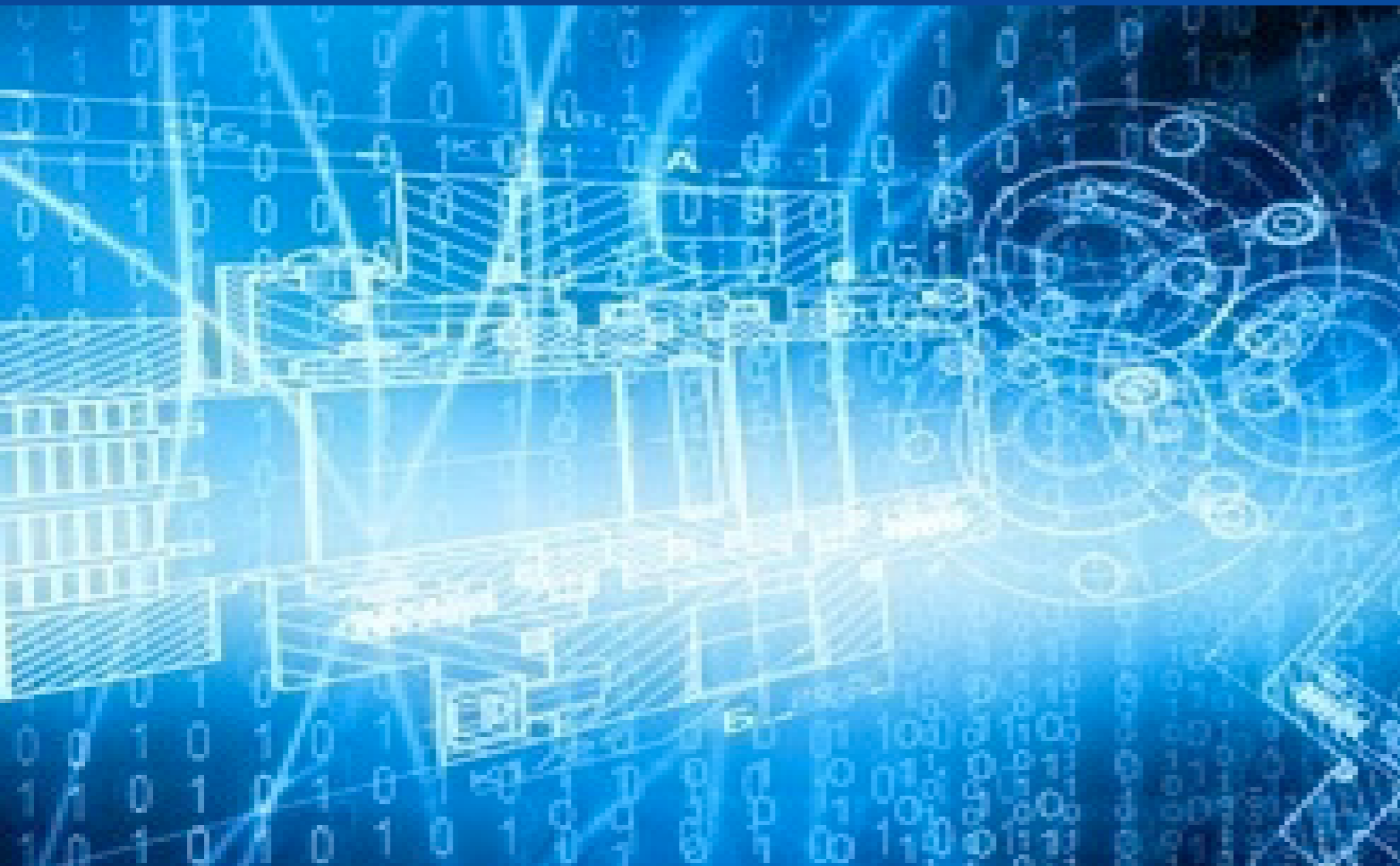


June 2022 Medicaid and CHIP Enrollment Trends Snapshot



*Center for Medicaid
and CHIP Services*

Enrollment Snapshot

- To be responsive to questions on Medicaid and CHIP enrollment, particularly given the impact of the COVID-19 public health emergency (PHE), this Enrollment Snapshot captures high level information on the most recently submitted month of Performance Indicator Enrollment Data¹ within the context of trends since February 2020², focusing on:
 - Total Medicaid and CHIP enrollment;
 - Medicaid enrollment;
 - CHIP enrollment;
 - Adult enrollment; and
 - Child enrollment.
- This analysis also captures high level information on the trend in the number of Medicaid and CHIP applications received by states.

¹ Performance Indicator Enrollment Data counts individuals receiving full-scope and comprehensive Medicaid and CHIP benefits.

² February 2020 serves as a baseline prior to the impacts of the COVID-19 pandemic and the enactment of the Families First Coronavirus Response Act (FFCRA) in March 2020. Section 6008 of FFCRA includes a continuous enrollment condition, which makes available a temporary 6.2 percentage point increase to each state or territory's federal medical assistance percentage (FMAP) during the national PHE. As a condition of receiving the FMAP increase, states must meet several requirements pertaining to eligibility and maintenance of enrollment.

Key Findings

- In June 2022, 89,444,160 individuals were enrolled in Medicaid and CHIP.
 - 82,344,149 individuals were enrolled in Medicaid in June 2022, an increase of 439,580 individuals from May 2022.
 - 7,100,011 individuals were enrolled in CHIP in June 2022, an increase of 25,789 individuals from May 2022.
- Since February 2020, enrollment in Medicaid and CHIP has increased by 18,752,902 individuals (26.5%).
 - Medicaid enrollment has increased by 18,379,194 individuals (28.7%).
 - CHIP enrollment has increased by 373,708 individuals (5.6%).
- The Medicaid enrollment increases are likely driven by COVID-19 and the continuous enrollment condition in the Families First Coronavirus Response Act (FFCRA).¹

Source: Medicaid and CHIP Eligibility and Enrollment Performance Indicator Data as of August 22, 2022.

¹ Families First Coronavirus Response Act, Pub. L. No. 116-127, Sec 6008, Temporary Increase of Medicaid FMAP. <https://www.congress.gov/116/plaws/publ127/PLAW-116publ127.pdf>

Key Findings (continued)

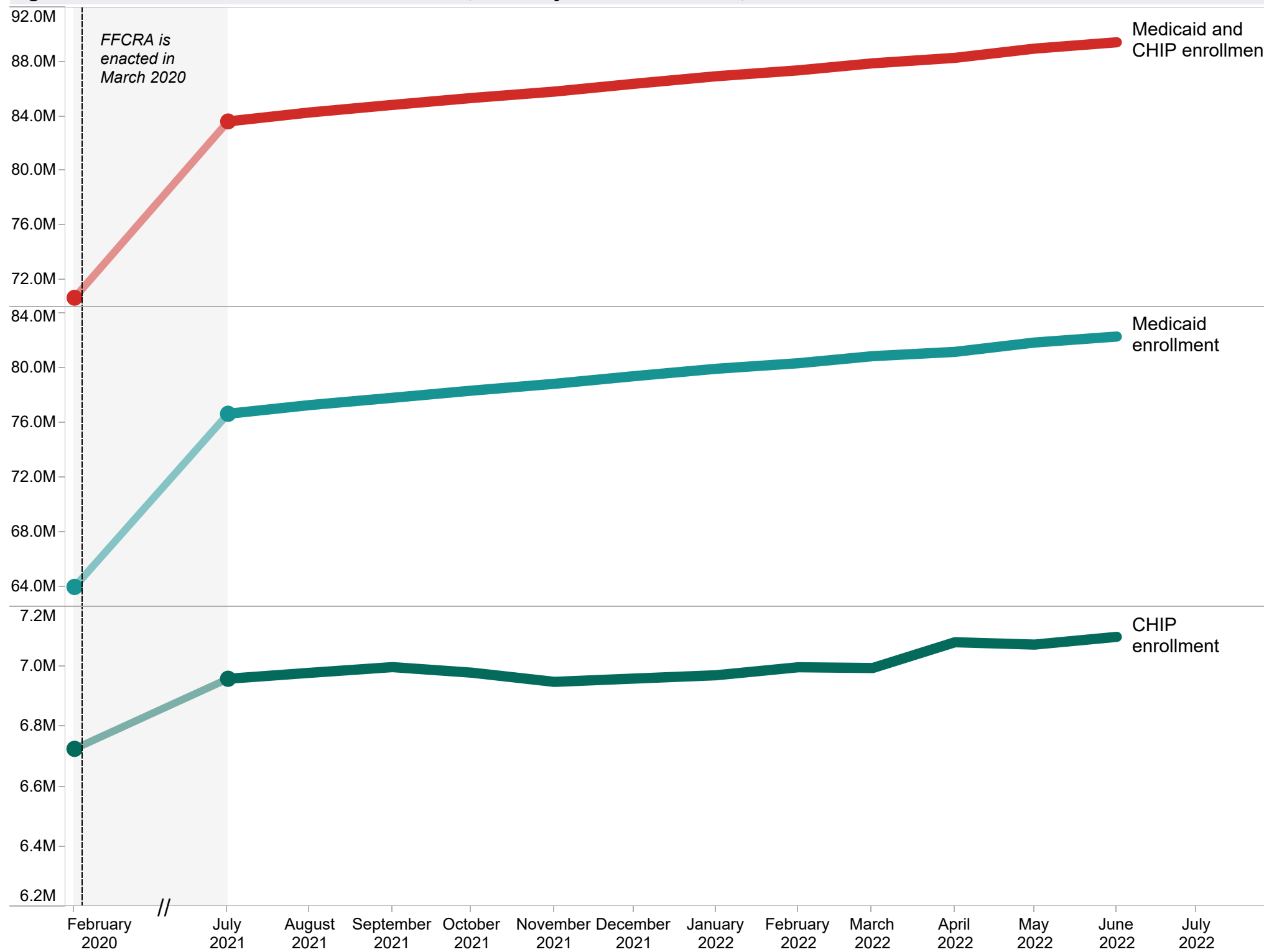
- In June 2022, 1,973,890 million applications for Medicaid and CHIP were submitted directly to states.¹
 - The number of applications submitted directly to states was 6 percent lower in June 2022 compared to May 2022.
- In June 2022, 115,055 applications were transferred from the Federally Facilitated Marketplace (FFM) to states.²
 - The number of transferred applications was 4 percent higher in June 2022 compared to May 2022.

Source: Medicaid and CHIP Eligibility and Enrollment Performance Indicator Data as of August 22, 2022.

¹ These counts include applications received by 49 states and the District of Columbia. Kansas is excluded because the state did not report applications data for May 2022 and June 2022. For additional information, please see Figure 6.

² These counts include applications received by 48 states and the District of Columbia. Kansas and Maine are excluded because these states did not have complete data on the number of applications submitted directly to the states between February 2020 and June 2022. For additional information, please see Figure 5.

Figure 1. National Medicaid and CHIP enrollment, February 2020 to June 2022, CMS Performance Indicator Data



Date	Medicaid and CHIP enrollment	Medicaid enrollment	CHIP enrollment
June 2022	89,444,160	82,344,149	7,100,011
May 2022	88,978,791	81,904,569	7,074,222
April 2022	88,301,080	81,219,006	7,082,074
March 2022	87,899,695	80,903,679	6,996,016
February 2022	87,384,856	80,386,222	6,998,634
January 2022	86,949,736	79,977,801	6,971,935
December 2021	86,396,073	79,435,247	6,960,826
November 2021	85,823,859	78,874,024	6,949,835
October 2021	85,356,887	78,376,470	6,980,417
September 2021	84,847,309	77,848,253	6,999,056
August 2021	84,296,159	77,316,046	6,980,113
July 2021	83,634,666	76,674,473	6,960,193
February 2020	70,691,258	63,964,955	6,726,303

Annual trend, July 2021 to June 2022

From July 2021 to June 2022, national Medicaid and CHIP enrollment increased by 5,809,494 individuals (6.9%).

Monthly trend, May 2022 to June 2022

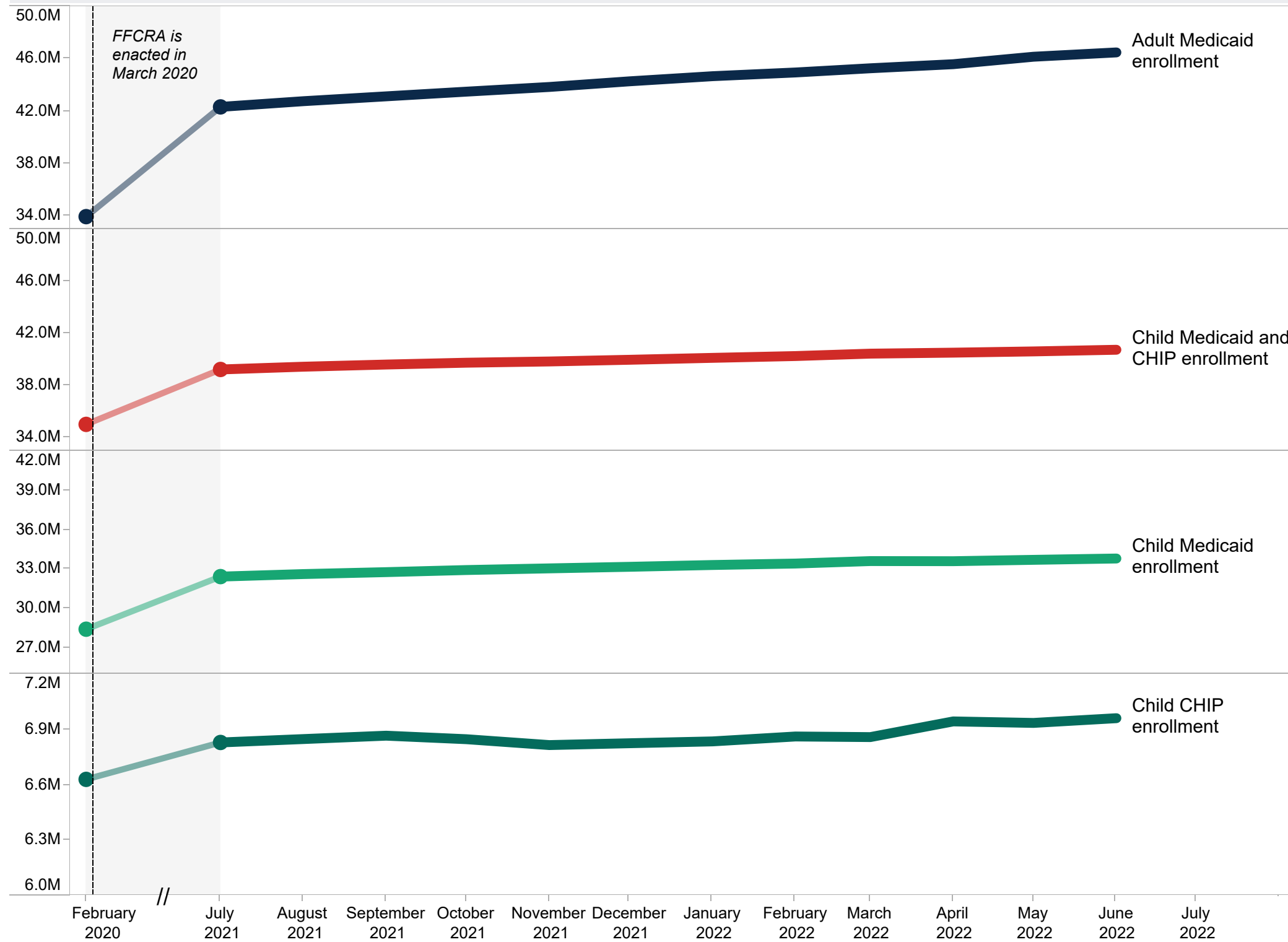
<u>Total enrollment</u>	<u>Medicaid enrollment</u>	<u>CHIP enrollment</u>
Increased by 465,369 (+0.5%) ↑	Increased by 439,580 (+0.5%) ↑	Increased by 25,789 (+0.4%) ↑

Cumulative change, February 2020 to June 2022*

<u>Total enrollment</u>	<u>Medicaid enrollment</u>	<u>CHIP enrollment</u>
Increased by 18,752,902 (+26.5%) ↑	Increased by 18,379,194 (+28.7%) ↑	Increased by 373,708 (+5.6%) ↑

Source: Medicaid and CHIP Eligibility and Enrollment Performance Indicator Data as of August 22, 2022.
Note: This analysis includes preliminary enrollment data from 50 states and the District of Columbia. "FFCRA" refers to the Families First Coronavirus Response Act. Section 6008 of FFCRA includes a continuous enrollment condition, which makes available a temporary 6.2 percentage point increase to each state or territory's federal medical assistance percentage (FMAP) during the national public health emergency. As a condition of receiving the FMAP increase, states must meet several requirements pertaining to eligibility and maintenance of enrollment.
 *The cumulative change compares the most recent enrollment data to February 2020, which serves as a baseline of enrollment prior to the impacts of the COVID-19 pandemic and FFCRA's continuous enrollment condition. For additional information on Medicaid and CHIP enrollment from December 2019 to June 2022, please see Appendix A.

Figure 2. National adult and child enrollment in Medicaid and CHIP, February 2020 to June 2022, CMS Performance Indicator Data



Date	Adult Medicaid enrollment	Child Medicaid and CHIP enrollment	Child Medicaid enrollment	Child CHIP enrollment
June 2022	46,475,391	40,752,398	33,792,488	6,959,910
May 2022	46,146,298	40,625,701	33,691,407	6,934,294
April 2022	45,578,125	40,530,299	33,587,834	6,942,465
March 2022	45,266,362	40,454,352	33,596,800	6,857,552
February 2022	44,945,784	40,269,844	33,408,975	6,860,869
January 2022	44,662,473	40,131,531	33,297,229	6,834,302
December 2021	44,272,039	39,984,352	33,159,990	6,824,362
November 2021	43,840,975	39,854,697	33,040,318	6,814,379
October 2021	43,483,394	39,759,922	32,913,782	6,846,140
September 2021	43,126,410	39,619,301	32,754,070	6,865,231
August 2021	42,755,448	39,452,566	32,605,688	6,846,878
July 2021	42,321,202	39,241,362	32,412,885	6,828,477
February 2020	33,954,195	35,031,274	28,402,488	6,628,786

Annual trend, July 2021 to June 2022

From July 2021 to June 2022, national adult and child enrollment increased by 5,665,225 individuals (6.9%).

Monthly trend, May 2022 to June 2022

Adult Medicaid enrollment	Child Medicaid and CHIP enrollment
Increased by 329,093 (+0.7%)	Increased by 126,697 (+0.3%)

Cumulative change, February 2020 to June 2022*

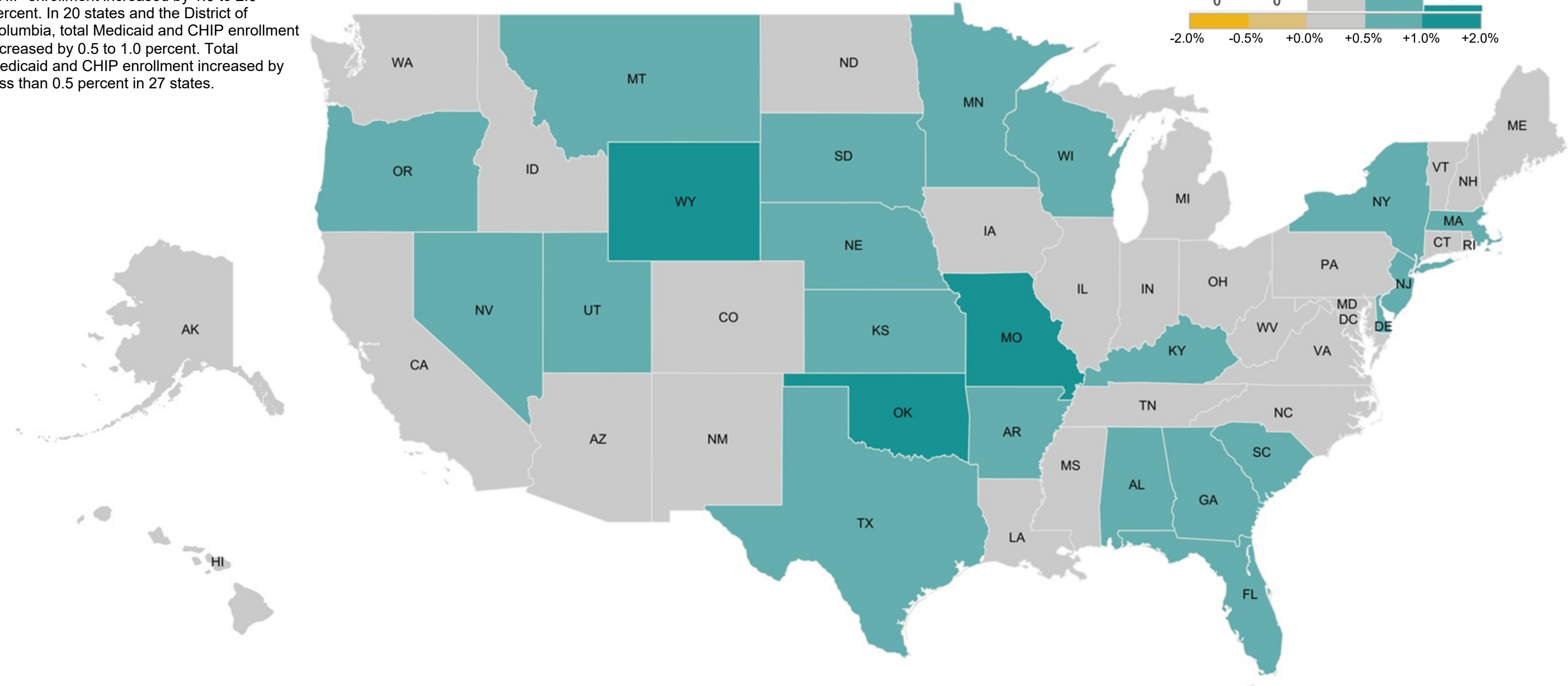
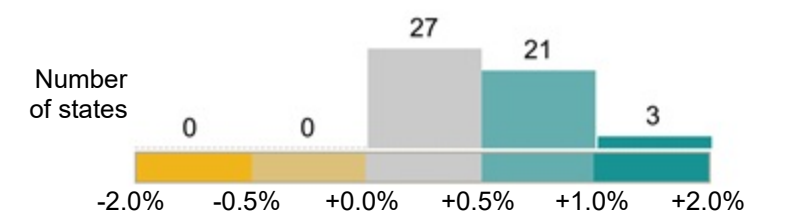
Adult Medicaid enrollment	Child Medicaid and CHIP enrollment
Increased by 12,521,196 (+36.9%)	Increased by 5,721,124 (+16.3%)

Source: Medicaid and CHIP Eligibility and Enrollment Performance Indicator Data as of August 22, 2022.
Note: This analysis includes preliminary enrollment data from 49 states and the District of Columbia. Arizona is excluded because the state did not report the breakouts for adult and child enrollment between February 2020 and June 2022. "FFCRA" refers to the Families First Coronavirus Response Act. Section 6008 of FFCRA includes a continuous enrollment condition, which makes available a temporary 6.2 percentage point increase to each state or territory's federal medical assistance percentage (FMAP) during the national public health emergency. As a condition of receiving the FMAP increase, states must meet several requirements pertaining to eligibility and maintenance of enrollment.
 *The cumulative change compares the most recent enrollment data to February 2020, which serves as a baseline of enrollment prior to the impacts of the COVID-19 pandemic and FFCRA's continuous enrollment condition. For additional information on adult and child enrollment in Medicaid and CHIP from December 2019 to June 2022, please see Appendix B.

Figure 3. Change in total Medicaid and CHIP enrollment, May 2022 to June 2022, CMS Performance Indicator Data

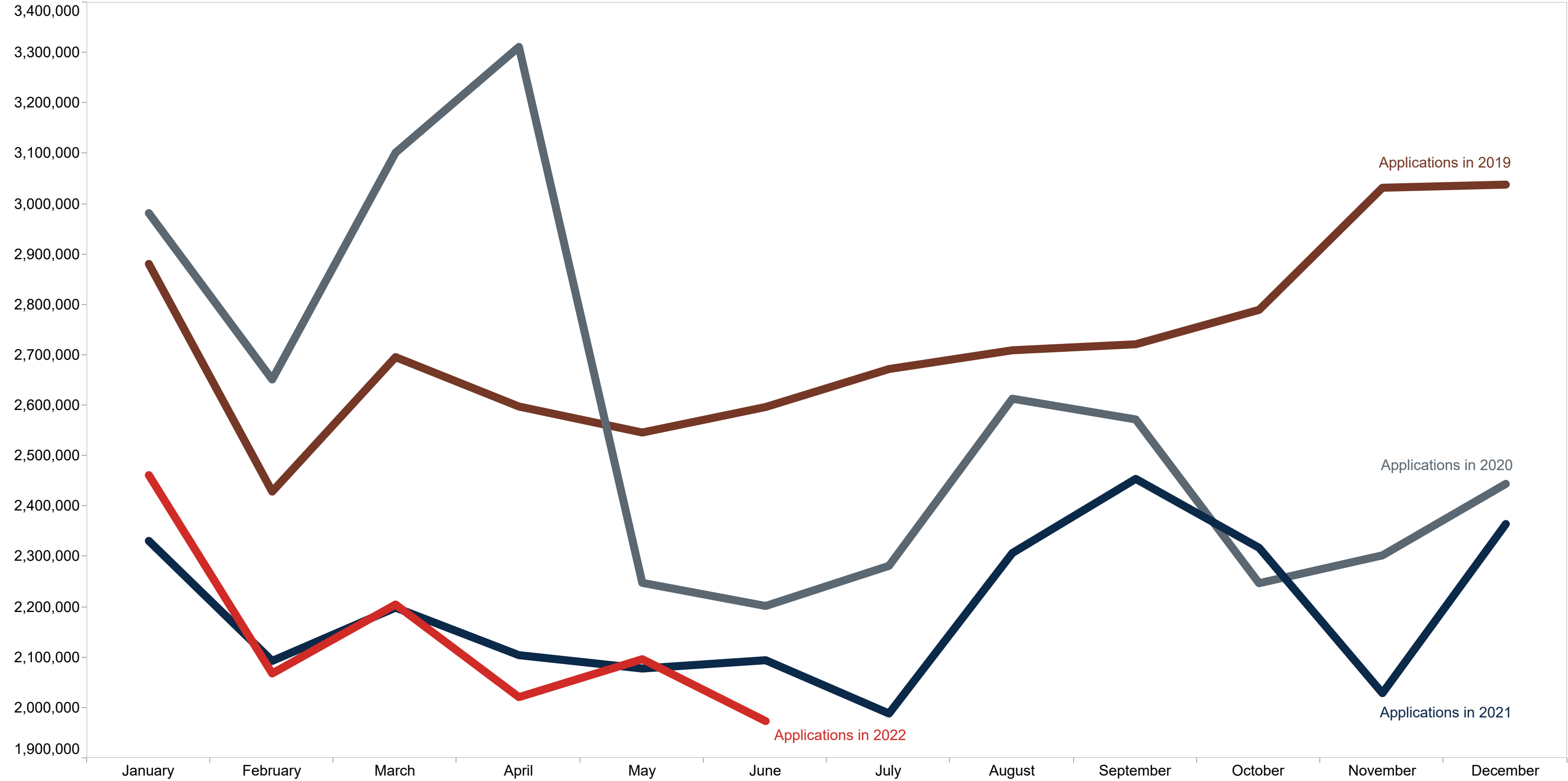
Nationally, total Medicaid and CHIP enrollment increased by 0.5 percent from May 2022 to June 2022. In Missouri, Oklahoma, and Wyoming, total Medicaid and CHIP enrollment increased by 1.0 to 2.0 percent. In 20 states and the District of Columbia, total Medicaid and CHIP enrollment increased by 0.5 to 1.0 percent. Total Medicaid and CHIP enrollment increased by less than 0.5 percent in 27 states.

Percentage change in Medicaid and CHIP enrollment



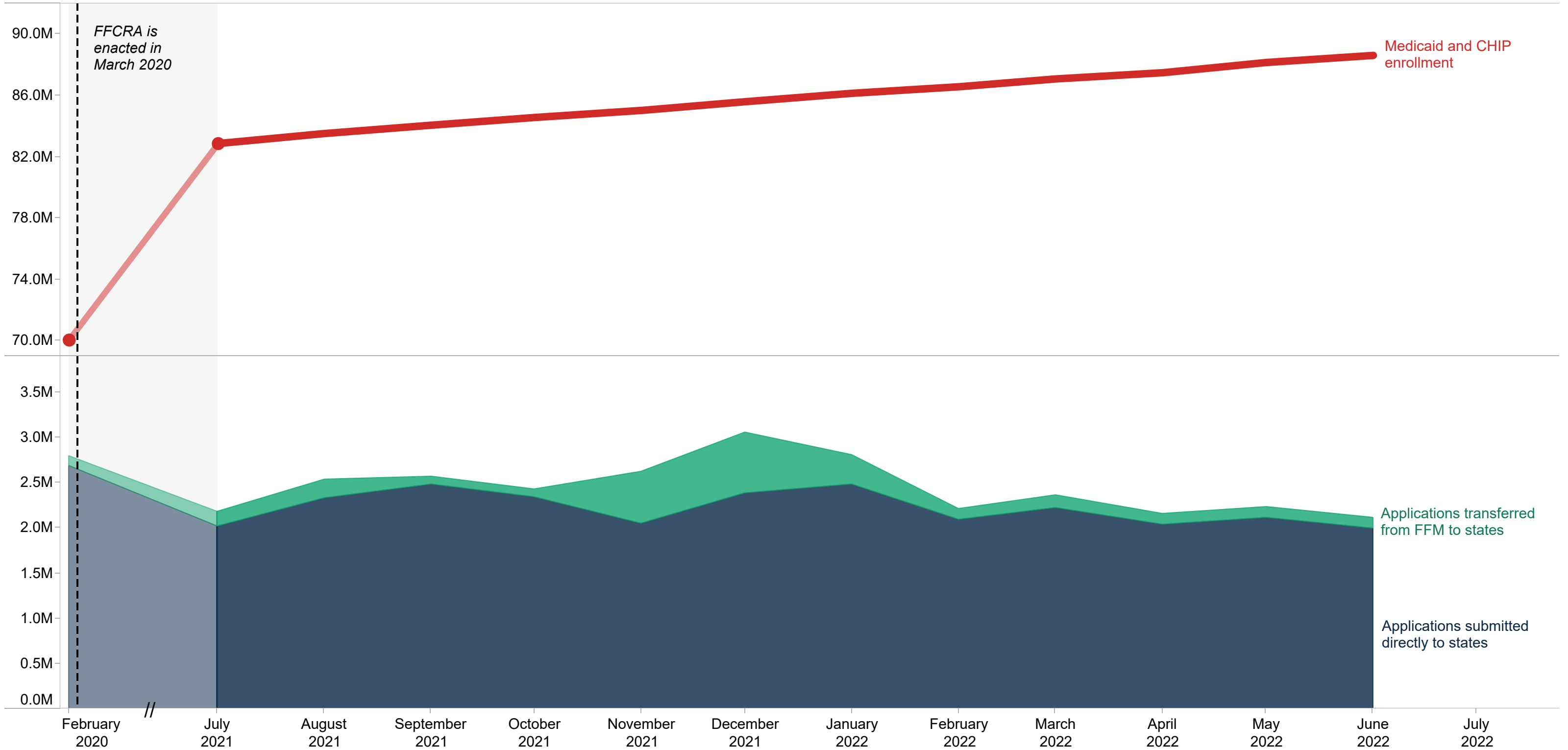
Source: Medicaid and CHIP Eligibility and Enrollment Performance Indicator Data as of August 22, 2022.
Note: This analysis includes preliminary enrollment data from 50 states and the District of Columbia.

Figure 4. National Medicaid and CHIP applications submitted directly to states from 2019 to 2022, CMS Performance Indicator Data



Source: Medicaid and CHIP Eligibility and Enrollment Performance Indicator Data as of August 22, 2022.
Note: Applications submitted directly to states include applications received by any state agency with the authority to make Medicaid or CHIP eligibility determinations, including the Medicaid agency, a separate CHIP agency, or a state-based marketplace. Applications transferred from the FFM are not included. This analysis includes preliminary applications data from 47 states and the District of Columbia. Kansas, Maine, and Tennessee are excluded because these states did not report applications data for one or more months between January 2019 and June 2022.

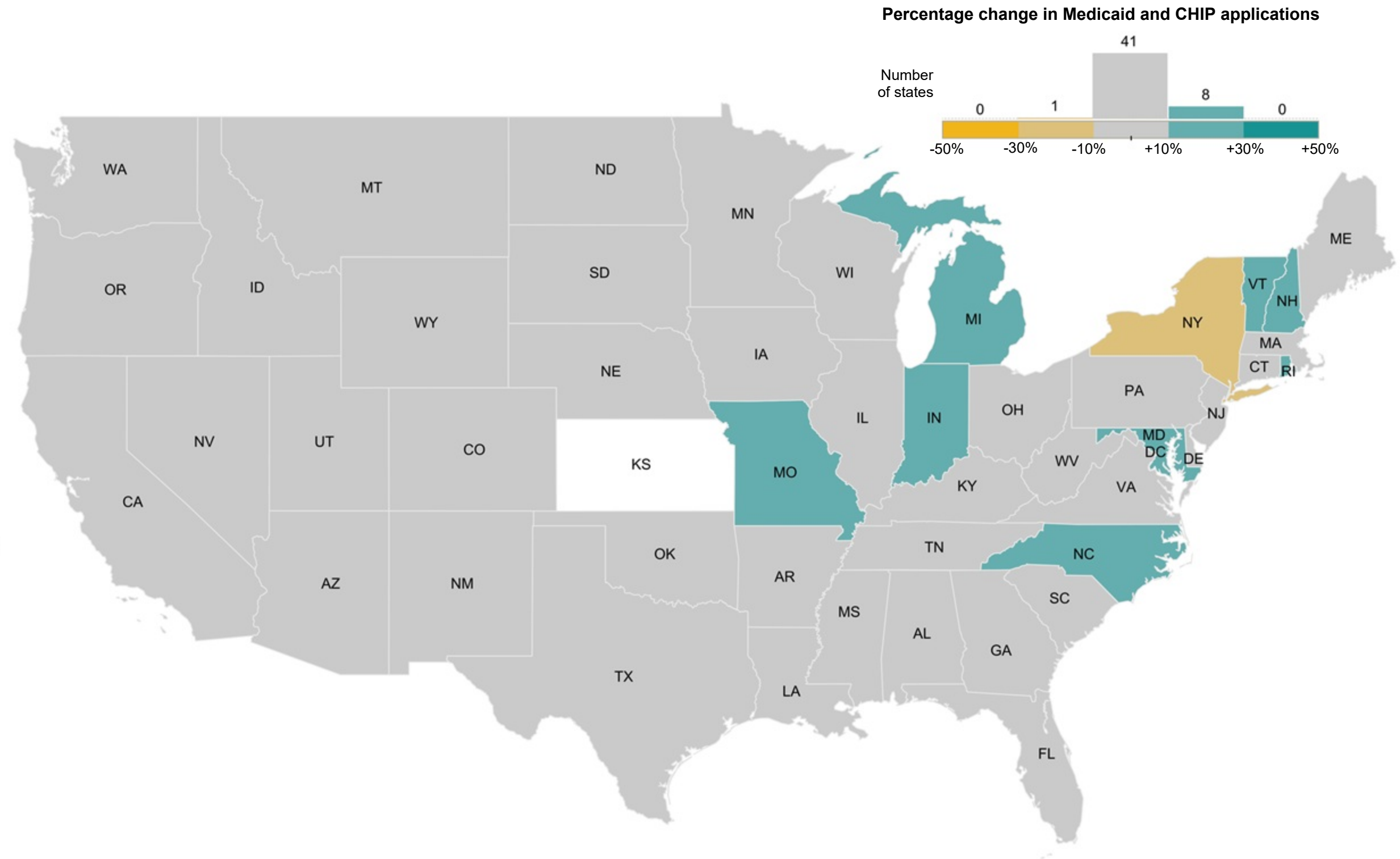
Figure 5. Comparison of Medicaid and CHIP enrollment with the number of applications received, February 2020 to June 2022, CMS Performance Indicator Data



Source: Medicaid and CHIP Eligibility and Enrollment Performance Indicator Data as of August 22, 2022.
Note: Applications submitted directly to states include applications received by any state agency with the authority to make Medicaid or CHIP eligibility determinations, including the Medicaid agency, a separate CHIP agency, or a state-based marketplace. Applications transferred from the FFM to states include the total number of accounts electronically transferred from the FFM to states for Medicaid or CHIP. This analysis includes preliminary enrollment, applications, and account transfer data from 48 states and the District of Columbia. Kansas and Maine did not report data on applications submitted directly to the state for one or more months between February 2020 and June 2022, and so are excluded from this analysis.
Data quality: Kentucky, Nevada, New Jersey, New Mexico, and Pennsylvania unexpectedly reported applications transferred from the FFM to the state after having transitioned to a state-based marketplace in at least one month between February 2020 and June 2022. These five states are retained in the analysis despite this data quality concern.

Figure 6. Change in Medicaid and CHIP applications submitted directly to states, May 2022 to June 2022, CMS Performance Indicator Data

Nationally, the number of Medicaid and CHIP applications submitted directly to states was about 6 percent lower in June 2022 compared to May 2022. In New York, applications decreased by 22 percent. Applications changed by less than 10 percent in 40 states and the District of Columbia. In 8 states, applications increased by 10 to 30 percent from May 2022 to June 2022.



Source: Medicaid and CHIP Eligibility and Enrollment Performance Indicator Data as of August 22, 2022.

Note: Applications submitted directly to states include applications received by any state agency with the authority to make Medicaid or CHIP eligibility determinations, including the Medicaid agency, a separate CHIP agency, or a state-based marketplace. Applications transferred from the FFM are not included. This analysis includes preliminary applications data from 49 states and the District of Columbia. Kansas is excluded because the state did not report applications data for May 2022 and June 2022.

Data context: In New York, applications decreased by 21.9 percent (173,656 applications) from May 2022 to June 2022.

Appendices

Appendix A. National Medicaid and CHIP enrollment, December 2019 to June 2022

Date	Medicaid and CHIP enrollment	Medicaid enrollment	CHIP enrollment
December 2019	70,642,098	63,946,745	6,695,353
January 2020	70,746,105	64,037,936	6,708,169
February 2020	70,691,258	63,964,955	6,726,303
March 2020	70,979,903	64,222,709	6,757,194
April 2020	72,422,947	65,624,088	6,798,859
May 2020	73,587,368	66,823,700	6,763,668
June 2020	74,728,572	67,988,948	6,739,624
July 2020	75,613,908	68,860,630	6,753,278
August 2020	76,574,554	69,825,873	6,748,681
September 2020	77,378,501	70,603,436	6,775,065
October 2020	78,186,605	71,378,585	6,808,020
November 2020	78,963,151	72,136,380	6,826,771
December 2020	79,805,216	72,963,162	6,842,054
January 2021	80,584,252	73,745,212	6,839,040
February 2021	81,087,580	74,210,058	6,877,522
March 2021	81,741,852	74,852,983	6,888,869
April 2021	82,322,362	75,415,771	6,906,591
May 2021	82,782,364	75,857,983	6,924,381
June 2021	83,215,677	76,271,777	6,943,900
July 2021	83,634,666	76,674,473	6,960,193
August 2021	84,296,159	77,316,046	6,980,113
September 2021	84,847,309	77,848,253	6,999,056
October 2021	85,356,887	78,376,470	6,980,417
November 2021	85,823,859	78,874,024	6,949,835
December 2021	86,396,073	79,435,247	6,960,826
January 2022	86,949,736	79,977,801	6,971,935
February 2022	87,384,856	80,386,222	6,998,634
March 2022	87,899,695	80,903,679	6,996,016
April 2022	88,301,080	81,219,006	7,082,074
May 2022	88,978,791	81,904,569	7,074,222
June 2022	89,444,160	82,344,149	7,100,011

Source: Medicaid and CHIP Eligibility and Enrollment Performance Indicator Data as of August 22, 2022.
Note: This table summarizes Medicaid and CHIP enrollment since December 2019. This table is provided as a supplement to Figure 1, and includes preliminary enrollment data from 50 states and the District of Columbia.

Appendix B. National adult and child enrollment in Medicaid and CHIP, December 2019 to June 2022

Date	Adult Medicaid enrollment	Child Medicaid and CHIP enrollment	Child Medicaid enrollment	Child CHIP enrollment
December 2019	33,874,817	35,059,208	28,461,305	6,597,903
January 2020	33,996,443	35,047,030	28,435,576	6,611,454
February 2020	33,954,195	35,031,274	28,402,488	6,628,786
March 2020	34,013,330	35,219,829	28,563,528	6,656,301
April 2020	35,029,664	35,612,050	28,914,312	6,697,738
May 2020	35,710,692	36,059,314	29,398,538	6,660,776
June 2020	36,419,854	36,468,786	29,833,953	6,634,833
July 2020	36,950,955	36,800,545	30,155,057	6,645,488
August 2020	37,559,660	37,127,512	30,488,221	6,639,291
September 2020	38,084,730	37,390,343	30,727,086	6,663,257
October 2020	38,594,552	37,667,367	30,973,862	6,693,505
November 2020	39,110,292	37,910,057	31,200,607	6,709,450
December 2020	39,701,751	38,140,458	31,417,959	6,722,499
January 2021	40,248,558	38,353,885	31,636,268	6,717,617
February 2021	40,566,520	38,522,719	31,768,401	6,754,318
March 2021	40,998,782	38,731,800	31,967,824	6,763,976
April 2021	41,384,760	38,910,537	32,130,681	6,779,856
May 2021	41,685,975	39,051,785	32,255,516	6,796,269
June 2021	41,955,431	39,200,690	32,386,901	6,813,789
July 2021	42,321,202	39,241,362	32,412,885	6,828,477
August 2021	42,755,448	39,452,566	32,605,688	6,846,878
September 2021	43,126,410	39,619,301	32,754,070	6,865,231
October 2021	43,483,394	39,759,922	32,913,782	6,846,140
November 2021	43,840,975	39,854,697	33,040,318	6,814,379
December 2021	44,272,039	39,984,352	33,159,990	6,824,362
January 2022	44,662,473	40,131,531	33,297,229	6,834,302
February 2022	44,945,784	40,269,844	33,408,975	6,860,869
March 2022	45,266,362	40,454,352	33,596,800	6,857,552
April 2022	45,578,125	40,530,299	33,587,834	6,942,465
May 2022	46,146,298	40,625,701	33,691,407	6,934,294
June 2022	46,475,391	40,752,398	33,792,488	6,959,910

Source: Medicaid and CHIP Eligibility and Enrollment Performance Indicator Data as of August 22, 2022.
Note: This table summarizes adult and child enrollment in Medicaid and CHIP since December 2019. This table is provided as a supplement to Figure 2, and includes preliminary enrollment data from 49 states and the District of Columbia. Arizona is excluded from both Figure 2 and Appendix B because the state did not report the breakouts for adult and child enrollment between February 2020 and June 2022.

Background

- This is a Center for Medicaid & CHIP Services (CMCS) Medicaid and CHIP Coverage Learning Collaborative (MAC LC) project that monitors Medicaid and Children's Health Insurance Program (CHIP) enrollment trends, primarily using the Centers for Medicare and Medicaid Services (CMS) Performance Indicator Data.
- The MAC LC is a CMCS project that provides a forum for facilitated discussion and learning across CMS and states, with the goal of implementing and improving the programs, tools, and systems needed to ensure high-performing state health insurance programs. The MAC LC has enabled CMS to more effectively identify issues and also monitor and improve program performance.
- This snapshot is a companion to the June 2022 Medicaid & CHIP Application, Eligibility, and Enrollment Data posted on [Medicaid.gov](https://www.Medicaid.gov).
- The Enrollment Trends project primarily relies on Performance Indicator Data. All states—including the District of Columbia—provide data each month about their Medicaid and CHIP eligibility and enrollment activity. These data reflect a range of indicators related to key application, eligibility, and enrollment processes within the state Medicaid and CHIP agency. The complete data set is available on Data.Medicaid.gov.